




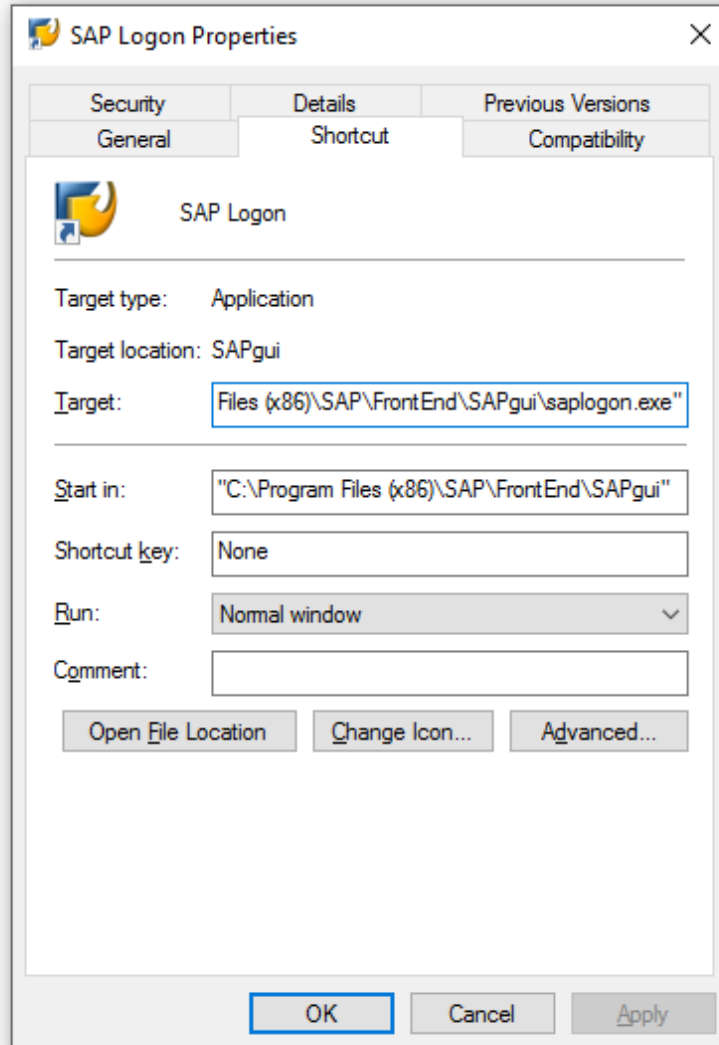
How to create two SAPLogn Applications



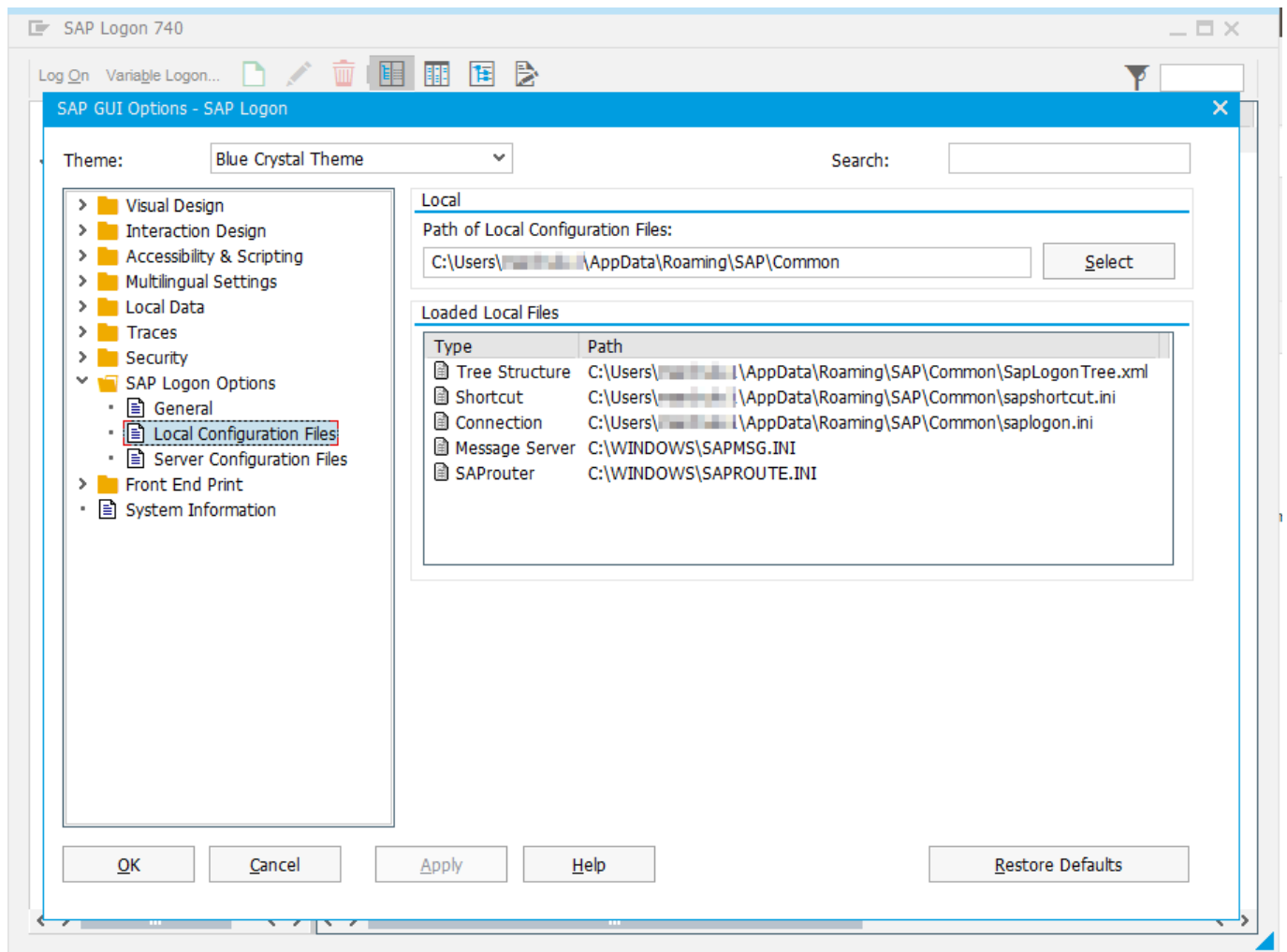
If you work with different SAP systems and these systems do not exist in your main SAPLogon, then you can create one more shortcut with your own *saplogon.ini* file.

Usually the default SAP Logon shortcut has next settings:

> This PC > Windows (C:) > ProgramData > Microsoft > Windows > Start Menu > Programs > SAP Front End				
Name	^	Date modified	Type	Size
 SAP Knowledge Warehouse		02-Nov-17 02:59 P...	File folder	
 SAP GUI Configuration		23-Dec-16 01:39 PM	Shortcut	2 KB
 SAP Logon		23-Dec-16 01:39 PM	Shortcut	2 KB



Target: *"C:\Program Files (x86)\SAP\FrontEnd\SAPgui\saplogon.exe"*

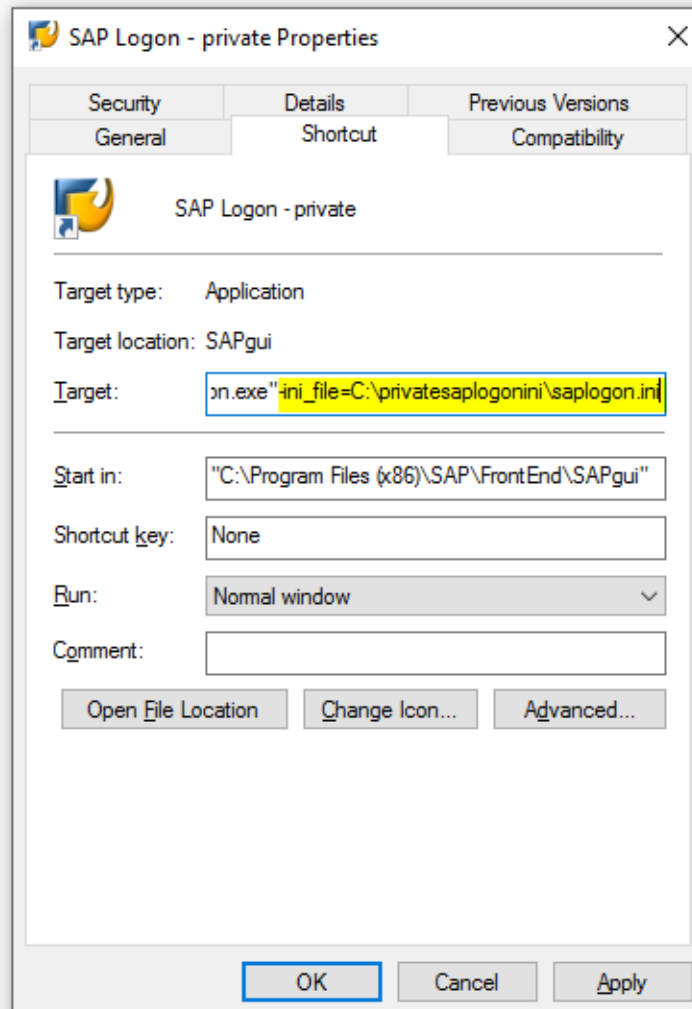


Standard saplogon.ini file is stored here:
C:\Users\<username>\AppData\Roaming\SAP\Common\saplogon.ini

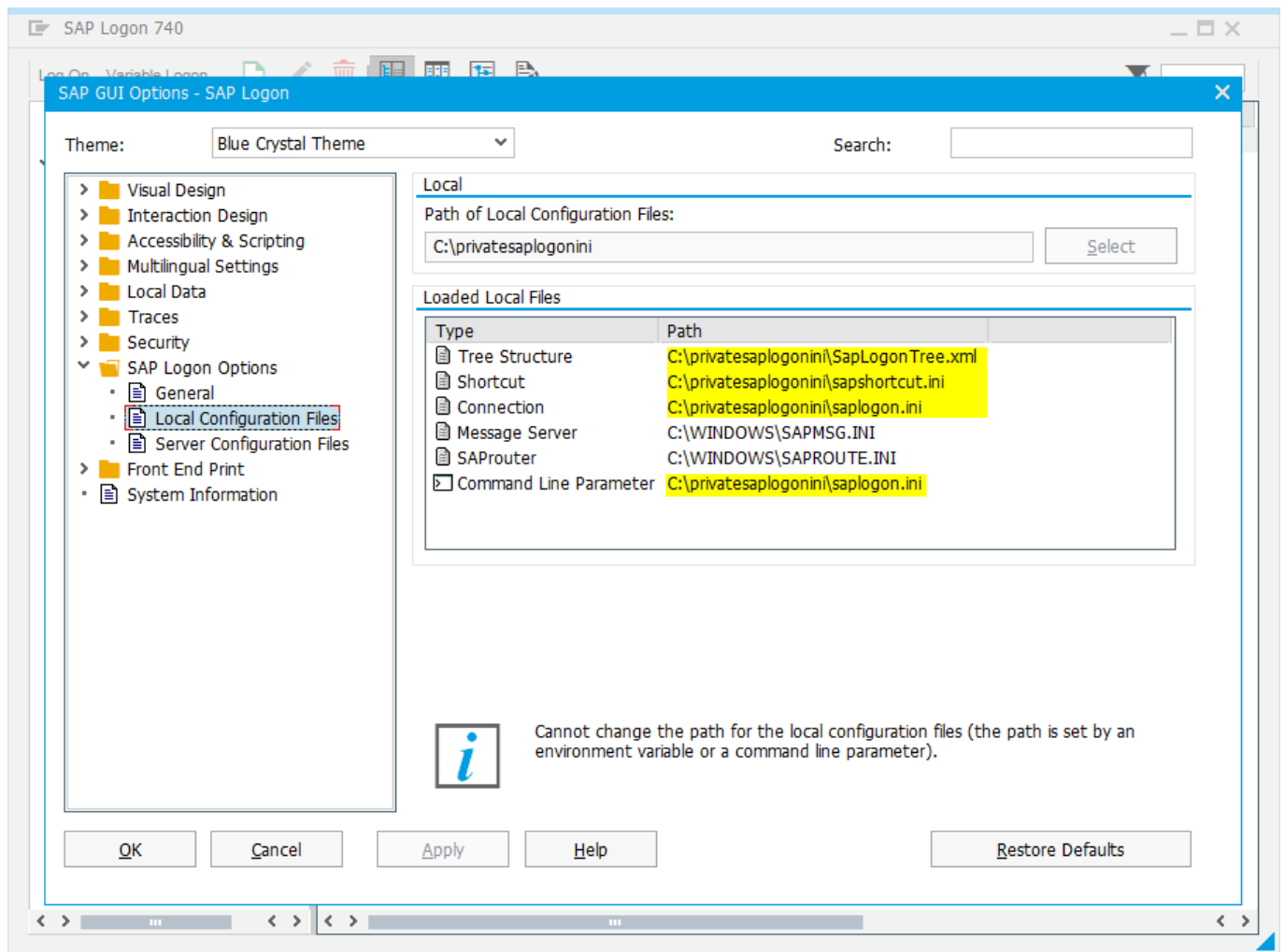
In order to use own SAPlogon with private saplogon.ini file, you should do the below:

1. Copy SAPlogon from SAPFrontend in start menu. Re-name a new shortcut to 'SAP Logon - private' or any others.
2. Change the properties of the copied SAPlogon shortcut:

> This PC > Windows (C:) > ProgramData > Microsoft > Windows > Start Menu > Programs > SAP Front End			
Name	Date modified	Type	Size
SAP Knowledge Warehouse	02-Nov-17 02:59 P...	File folder	
SAP GUI Configuration	23-Dec-16 01:39 PM	Shortcut	2 KB
SAP Logon - private	27-Jun-18 08:58 AM	Shortcut	2 KB
SAP Logon	23-Dec-16 01:39 PM	Shortcut	2 KB



change the target path to: "C:\Program Files (x86)\SAP\FrontEnd\SAPgui\saplogon.exe" -
ini_file=C:\privatesaplogonini\saplogon.ini



Done. In this way you can have as many different SAPLogons as you need.

Tips! You can log on to the system using a command line (Run):

Windows -> Start -> Run

SAPGUI <Server> <Instance No.>

Example: "SAPGUI localhost 01"

The SSO will not work in this case.