

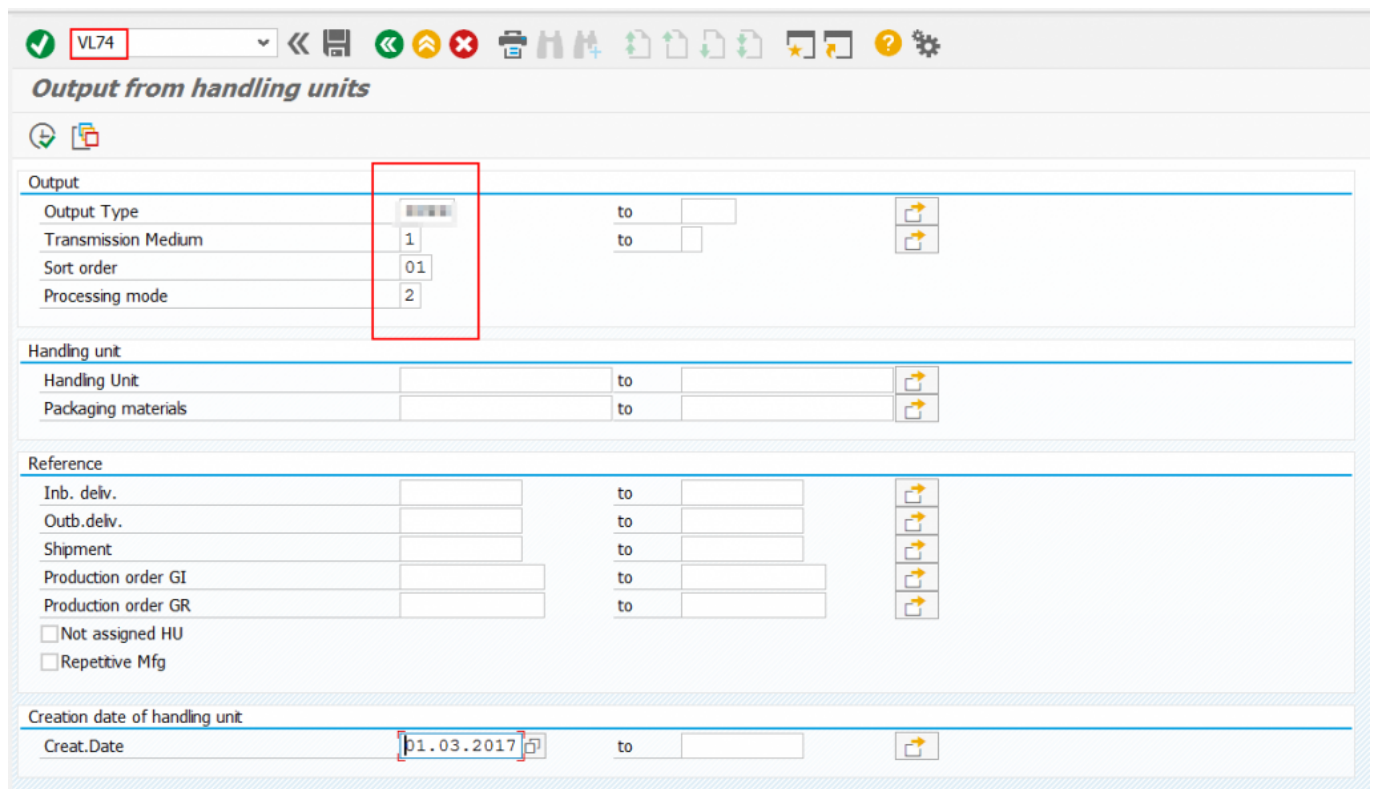
# How to print barcode label on normal printer



Sometimes it happens when you need print out bar-code labels but you cannot. It can happens due to various reasons, for example a printer was broken, problems with connection, etc. In this article I propose you a workaround. How to print barcode labels on normal printer. I have ZEBRA printers so and solution will be for them ☐ As you know, SAP generate spool with ZPL (Zebra Programming Language) code and it is not readable by normal people. Our task is to convert 'special characters' to normal text and barcodes.

**So lets go step by step:**

**Step 1.** Print or re-print output. In this case i use transaction **VL74**



VL74

**Output from handling units**

Output

Output Type		to		
Transmission Medium	1	to		
Sort order	01			
Processing mode	2			

Handling unit

Handling Unit		to		
Packaging materials		to		

Reference

Inb. deliv.		to		
Outb. deliv.		to		
Shipment		to		
Production order GI		to		
Production order GR		to		
<input type="checkbox"/> Not assigned HU				
<input type="checkbox"/> Repetitive Mfg				

Creation date of handling unit

Creat.Date	01.03.2017	to		
------------	------------	----	--	--

...select a line and **Process** (Shift+F2)

## A set of navigation icons typically found in presentation software like Beamer. From left to right, they include: a clock icon (highlighted with a red box), a magnifying glass over a document, a network diagram, a green arrow pointing up, a document with a green arrow, a stack of papers, a horizontal bar chart, and four arrows pointing left, right, and both directions.

<input checked="" type="checkbox"/>	10	00000006	01	0000000000	0000	1	000	0000	0000000000	0000000000	0000	0000000000
-------------------------------------	----	----------	----	------------	------	---	-----	------	------------	------------	------	------------

✔ All selected output successfully processed






















Further selection criteria...

Spool requests

Output requests

Spool Request Number

Created By

1

Created On

to

Client

Authorization

Output Device

Title

Recipient

Department

System Name

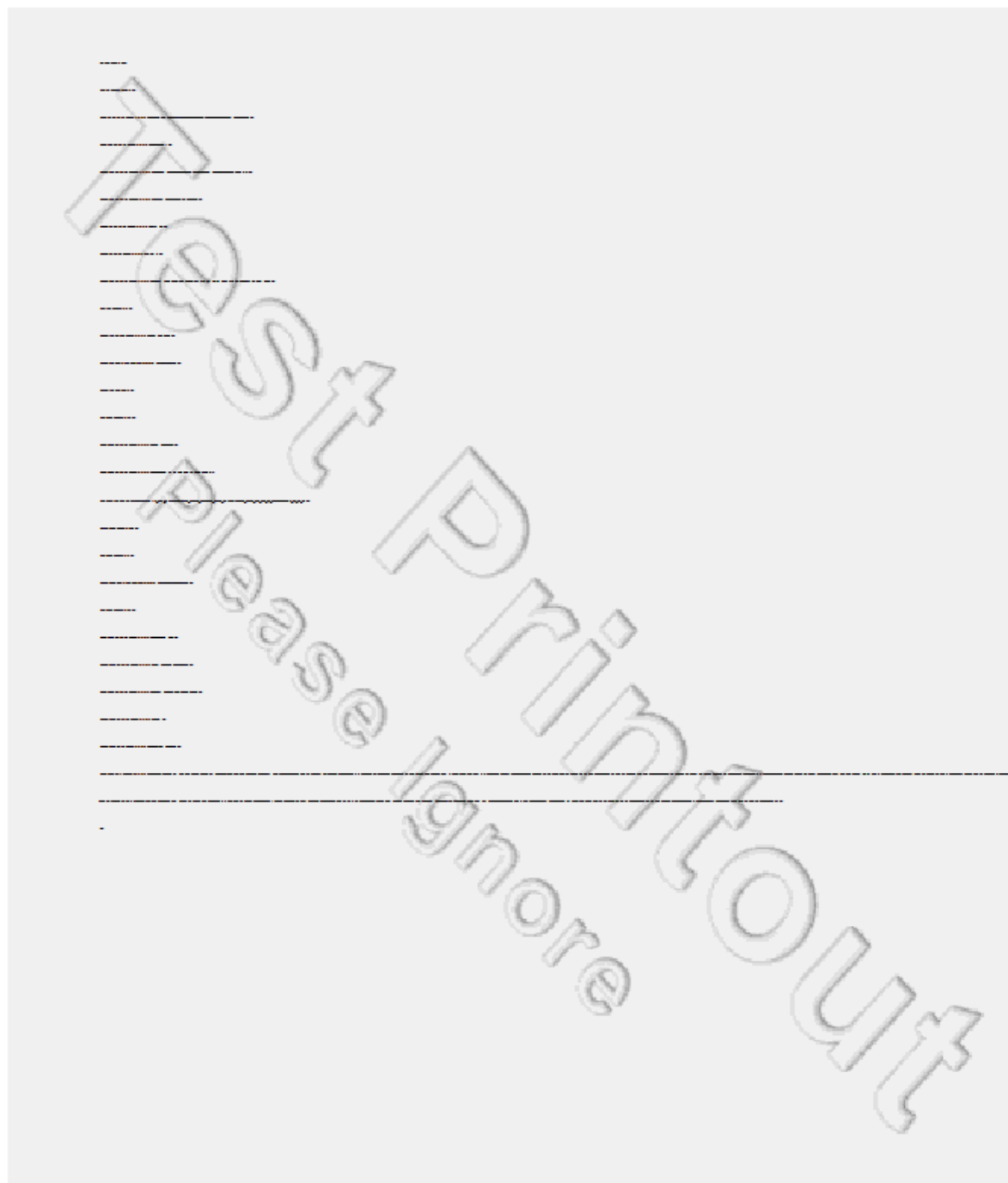
Output Controller: List of Spool Requests



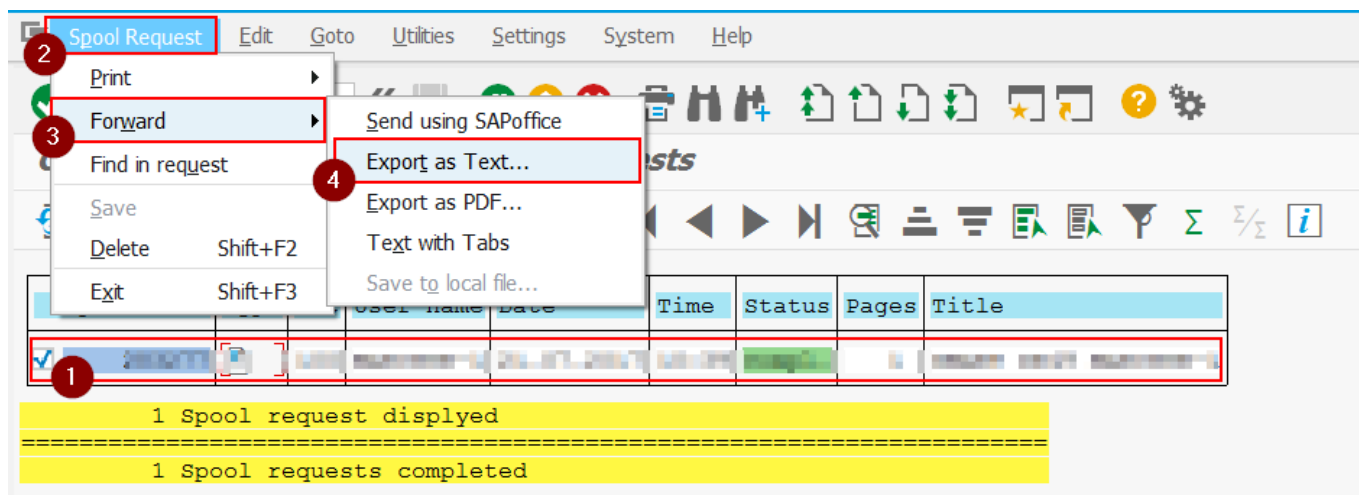
<input type="checkbox"/>	Spool no.	Type	Clt	User name	Date	Time	Status	Pages	Title
<input type="checkbox"/>	2		100				Compl.	1	SM

1 Spool request displyed

1 Spool requests completed



**Step 3.** Download the Spool with Raw data (generated code in ZPL language) to PC.

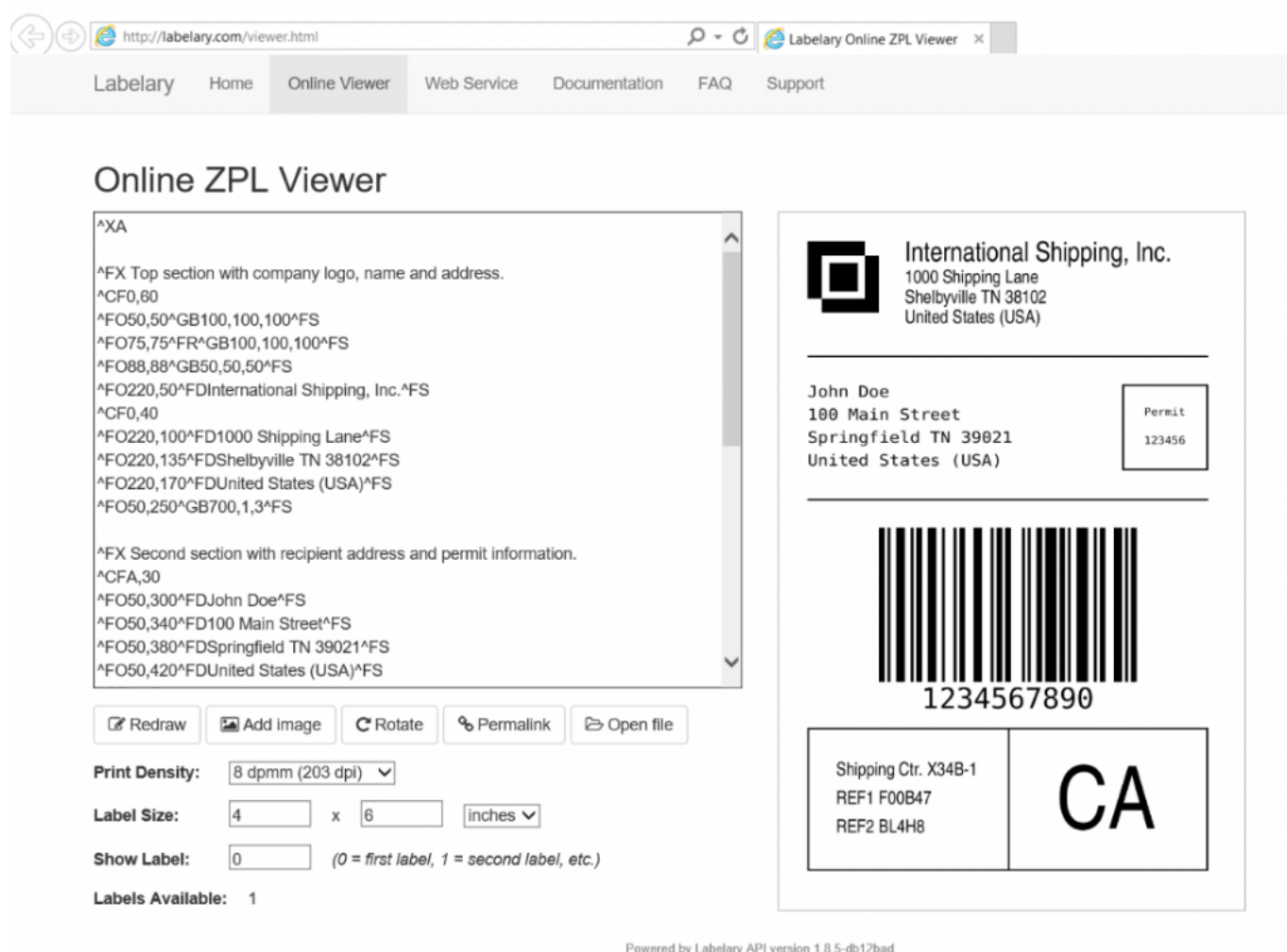


you should receive a message with file name and folder

File C:\Users\...7.TXT stored in directory C:\Users\...Documents\SAP\SAP GUI

**Step 4.** Open the file and copy all text!!!

**Step 5.** Go to **Online ZPL Viewer** and generate your label



That's it, you can save the label and print on a normal printer.

The Labelary has an API and you can automate the process as I did ☐

I created the batch file "**generate\_label.cmd**" in the folder with the downloaded spool files:

```
@ECHO OFF
SET index=1
SET output_file=label.pdf

SETLOCAL ENABLEDELAYEDEXPANSION
FOR %%f IN (*.txt) DO (
    SET file!index!=%%f
    ECHO !index! - %%f
    SET /A index=!index!+1
)

SETLOCAL DISABLEDELAYEDEXPANSION

SET /P selection="Select file by number:"

SET file%selection% &gt;nul 2&gt;&1

IF ERRORLEVEL 1 (
    ECHO "--&gt; Invalid number selected. Press any key to
Exit! &lt;--"
    PAUSE
    EXIT /B 1
)

CALL :RESOLVE %%file%selection%%

WHERE /q curl
IF ERRORLEVEL 1 (
    curl\curl.exe --request POST
http://api.labelary.com/v1/printers/12dpmm/labels/4x6/0/ --
form file=@%input_file% --header "Accept: application/pdf"
&gt; %output_file%
) ELSE (
    curl --request POST
http://api.labelary.com/v1/printers/12dpmm/labels/4x6/0/ --
form file=@%input_file% --header "Accept: application/pdf"
&gt; %output_file%
)
```

GOTO :EOF

:RESOLVE

SET input\_file=%1

GOTO :EOF

EXIT

```
\---zebra_label
|   generate_label.cmd
|   label.pdf
|   spool_1.TXT
|   spool_2.TXT
|
\---curl
      curl-ca-bundle.crt
      curl.exe
```